

# BATTERY DISCONNECTOR



200 A

Series  
35



Mechanical operated battery disconnecter current to 200 Amp for highest requirements used in all vehicles.

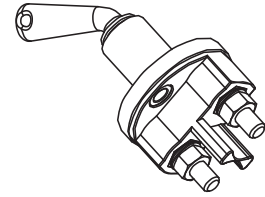
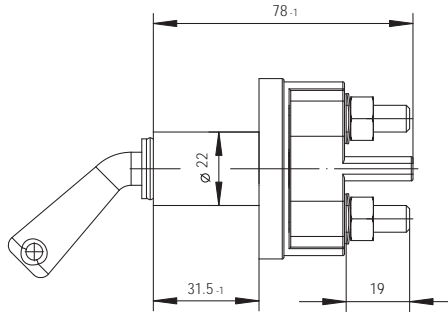
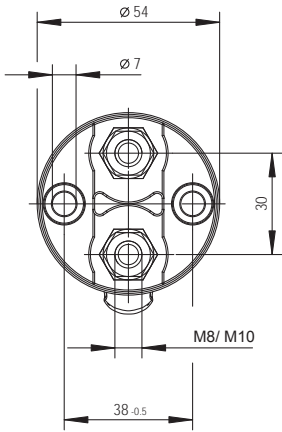
Single or dual pole configuration.

Seal IP67 and IP6K9K functionable in a ambient temperature  $-40^{\circ}\text{C}$  to  $+85^{\circ}\text{C}$ . Overload current 1000 Amp for 30 sec.

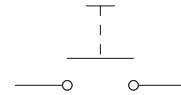
Battery disconnectors from KISSLING are able to be operated under full load, to ensure in emergency conditions a safe disconnection from the battery.

# Dimensions

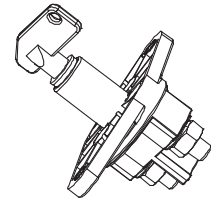
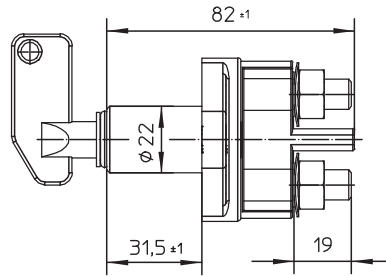
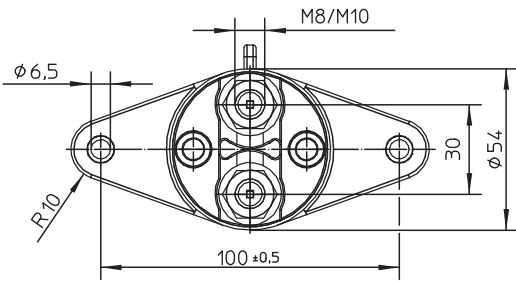
## 1 pole Standard mounting



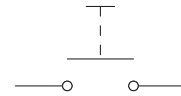
Circuit



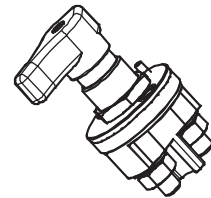
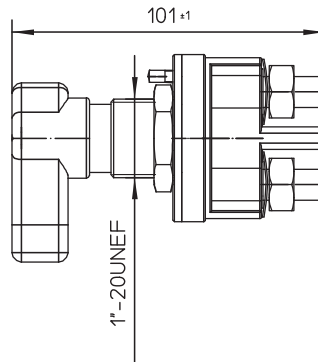
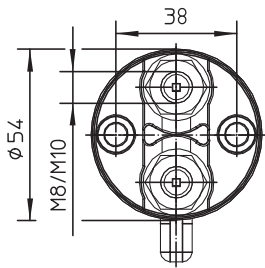
## 1 pole with longflange



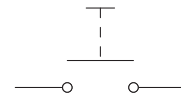
Circuit



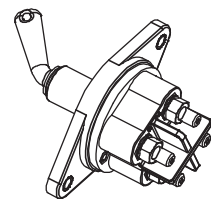
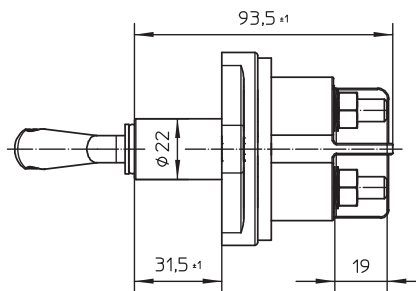
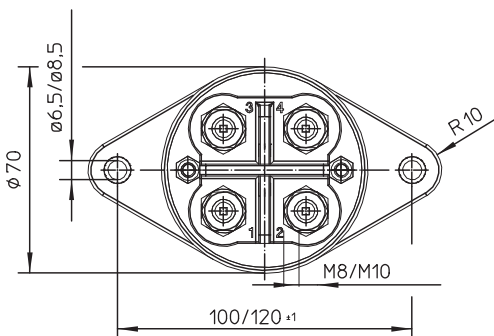
## 1 pole with central mounting



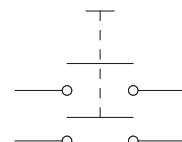
Circuit



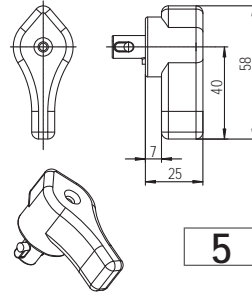
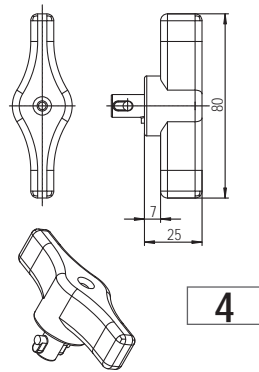
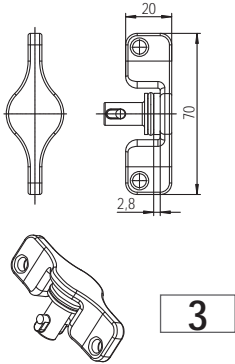
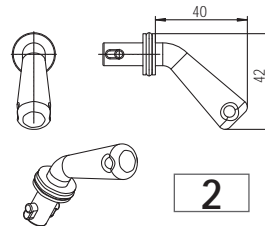
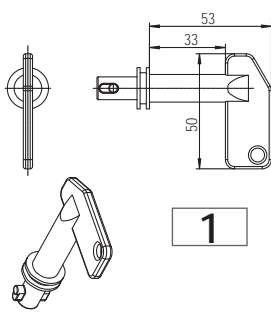
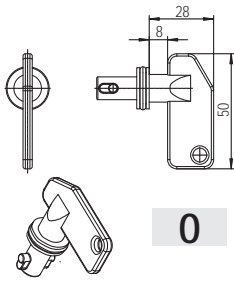
## 2 poles with longflange



Circuit



# Keys



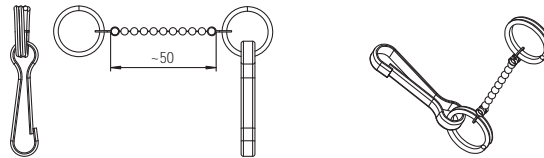
## Key overview

0	Standard
1	Standard long
2	45° turn off
3	T-handle
4	Double wing
5	Pointer key

## Key with chain

6	Standard
7	Standard long
8	45° turn off
9	T-handle

**Key Accessory:**  
Chain, length 50 mm



## Ordering Key

**35.210.000.R**

1 2 3 4 5 6 7 8

**Example**

35.210.000.R

■ Standard version  
□ Options

1	Series
2	Current
3	No. Poles
4	Mounting 1-pole
	Mounting 2-poles:
5	Thread
6	Key options
7	Key type
8	Key colour

- 2 200 A
- 3 1-pole  
2 2-poles
- 4 0 Standard  
1 Longflange 100 / Ø 6,5  
2 Longflange 120 / Ø 6,5  
3 Central mounting  
4 Longflange 100 / Ø 8,5  
5 Longflange 120 / Ø 8,5
- 5 0 M8  
1 M10
- 7 0 Removeable  
1 Not removeable
- 8 R Red  
S Black  
GN Green  
GE Yellow

Special types upon request

## Technical Data

### Environmental Characteristics

Temperature range	-40°F to +185°F
Protection	IP67 / IEC 529
Vibration	4G (50-2000 Hz)
Shock	6G, 11 msec
Weight 1-pole	0.3 pound
Weight 2-pole	0.8 pound

### Max. torque

Thread sizes	M8 = 12 - 13 Nm / M10 = 15-20 Nm
--------------	----------------------------------

### Electrical characteristics

Min. Isulation Resistance	100 MΩ
Dielectric withstanding voltage	1050 V / 1 min at 50 Hz
max. Contact drop at max. Load	150 mV
Voltage Range	up to 80 VDC
Duty rating, continous	200A
Overload	500A - 180 sec 1000A - 30 sec

<b>Wire section</b>	min. 70mm <sup>2</sup>
<b>Mounting position</b>	optional



KISSLING Electrotec Inc.  
320 A Business Parkway  
Greer, SC 29651 USA  
Telefon: +1 864-848-9766  
Telefax: +1 864-848-9767  
E-mail: [info@kissling.us](mailto:info@kissling.us)  
Internet: [www.kissling.us](http://www.kissling.us)